

Daystar-M

Indoor Lighting - Spot Lighting



Colour Options



Ral 9016



Ral 9005

TECHNICAL INFORMATION

Housing	Aluminum Injection
Frame	Aluminum Injection
Reflector	Metallized Surface Optics
Paint	Electrostatic Powder Paint

OPTICAL SPECIFICATIONS

Optics	Symmetrical
Light Output Angle	38°
UGR Value	UGR ≤ 18
CRI	CRI ≥ 80
Color Bin Value	Mc Adams ≤ 3

ELECTRICAL

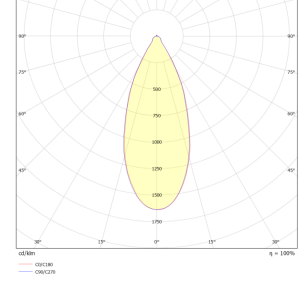
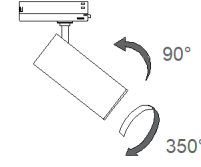
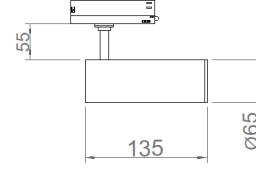
Power (W)	9-18W
Power Factor	>0.95
Light Source	COB LED
Cabbling	Halojen-Free
Input Voltage	220-240V AC / 50-60 Hz
LED Driver	High Efficiency Constant Current Output
Ambient Temperature	-20°C / +50°C
LED Lifetime L80B50	>50.000 Hour

OPTIONAL

DALI
Tunable White
CRI > 90
2700K ~ 6500K
Different color options

ASSEMBLY

Installation Type Ray Socket



Order Code	W	Lm	Productivity	CCT	CRI	ØxH (mm)	Kg
05638.60.30.014	18	1890	105 Lm/W	3000	Ra>80	Ø65x135	0.54

