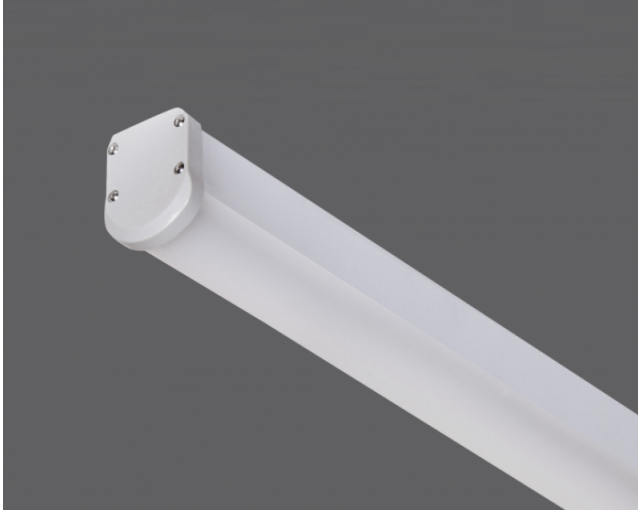


# Draw

Indoor Lighting - Industrial Lighting



Colour Options



Ral 9006

## TECHNICAL INFORMATION

**Housing** CO-EX Extrusion PC Profile  
**Side Cover** PC Injection  
**Diffuser** PC Opal Diffuser

## OPTICAL SPECIFICATIONS

**Optics** Symmetrical  
**Light Output Angle** 120°  
**UGR Value** UGR ≤ 22  
**CRI** CRI ≥ 80  
**Color Bin Value** Mc Adams ≤ 3

## ELECTRICAL

**Power (W)** 17-51W  
**Power Factor** >0.95  
**Light Source** Mid Power LED  
**Cabling** Halogen-Free  
**Input Voltage** 220-240V AC / 50-60 Hz  
**LED Driver** High Efficiency Constant Current Output  
**Ambient Temperature** -20°C / +50°C  
**LED Lifetime L80B50** >50.000 Hour

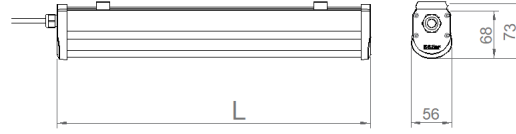
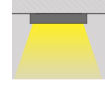
## OPTIONAL

- DALI  
- Tunable White  
- CRI > 90  
- Different RAL Color Options  
- Class-II Protection Class  
- AC-DC Supply(MBS)

- 1-10V DIM  
- Emergency Lighting Unit  
- 2700K ~ 6500K  
- Plug-in Energy Input Connector  
- PIR Sensor

## ASSEMBLY

**Installation Type** Surface Mounted  
**Mounting Apparatus** Metal Bracket



Order Code	W	Lm	CCT	CRI	L (mm)
07105.14.30.067	51	6700	3000	Ra>80	1420

