

Lightline - 049 D/E

Direkt/Endirekt

Indoor Lighting - Pendant Lighting, Linear Lighting



TECHNICAL INFORMATION

Housing Extruded Aluminum Profile
Side Cover Aluminum Injection
Diffuser Opal Diffuser with High Light Transmission
Paint Electrostatic Powder Paint
Dimensions(mm) 48(W) x 90(H)

OPTICAL SPECIFICATIONS

Optics Direct - Indirect
Light Output Angle 120°
UGR Value UGR ≤ 22
CRI CRI ≥ 80
Color Bin Value Mc Adams ≤ 3

ELECTRICAL

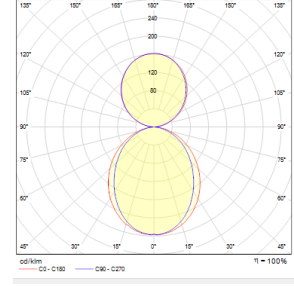
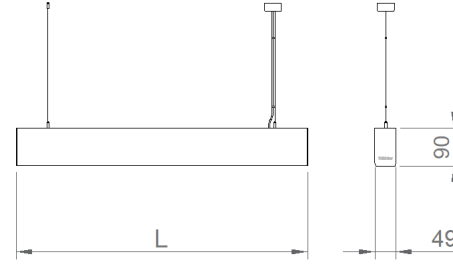
Power (W) 51W-78W
Power Factor >0.95
Light Source SMD Mid Power LED
Cabling Halojen-Free
Input Voltage 220-240V AC / 50-60 Hz
LED Driver High Efficiency Constant Current Output
Ambient Temperature -20°C / +50°C
LED Lifetime L80B50 >50.000 Hour

OPTIONAL

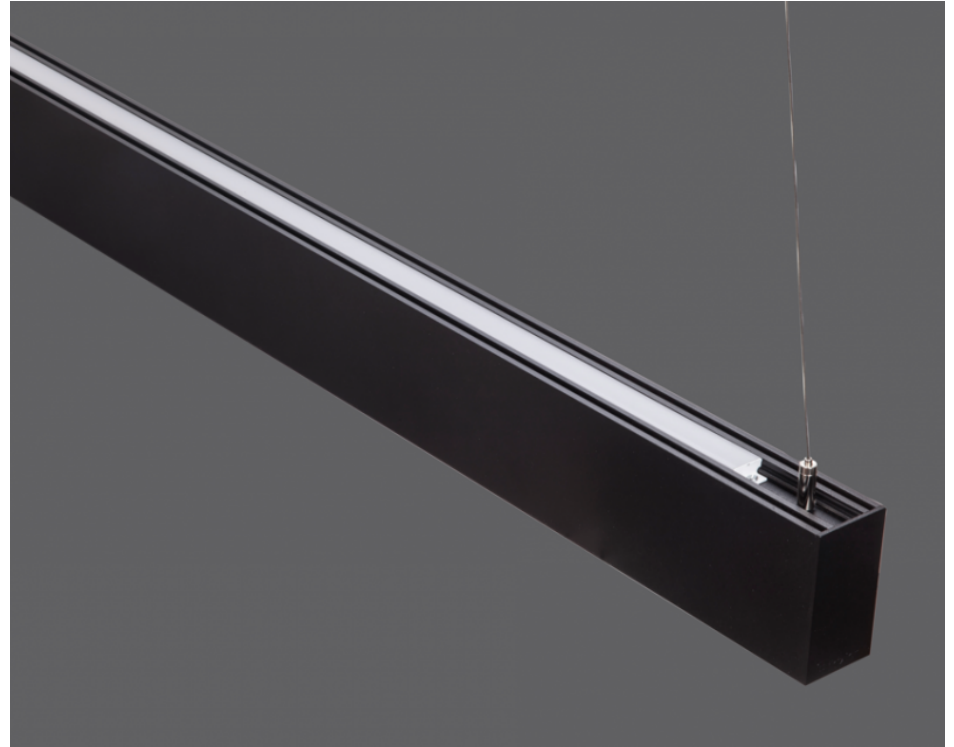
- DALI
- Tunable White
- CRI > 90
- Different RAL Color Options
- Class-II Protection Class
- 1-10V DIM
- Emergency Lighting Unit
- 2700K ~ 6500K
- Plug-in Energy Input Connector
- AC-DC Supply(MBS)

ASSEMBLY

Installation Type Pendant
Mounting Apparatus Height Adjustable Steel Wire



Order Code	W	Lm	CCT	CRI	Direct	Indirect	L (mm)	Burnin g Patter n	Kg
01180.49.40.087	78	8742	4000	Ra>80	60%	40%	1695	Çift Kontrol	3,9
01180.49.40.087	78	8742	4000	Ra>80	60%	40%	1695	Tek Kontrol	3,9



Verilen tüm elektriksel değerler nominal değerlerdir. Işık akısı ve bağlı elektrik yükü +/- %10 luk bir başlangıç toleransına tabidir. Renk sıcaklığı toleransı: +/-150 K. Katalogta ve web sitesinde yer alan teknik parametreler ve ürün kodlarını içeren bilgiler, projelere göre yapılan kişiselleştirmelerden dolayı standart ürünlerden farklılık gösterebilir. İkiizler Aydınlatma, ürünlerde haber vermeden değişiklik yapma hakkına sahiptir.

