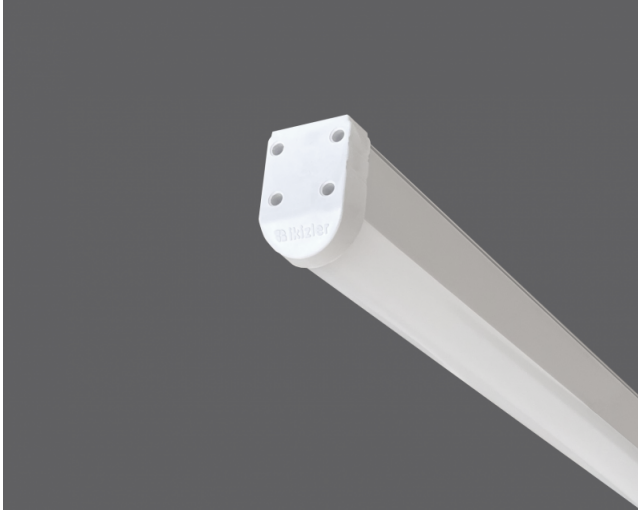


# Draw-MV

Indoor Lighting - Industrial Lighting



Colour Options



Ral 9006

## TECHNICAL INFORMATION

**Housing** CO-EX Extrusion PC Profile  
**Side Cover** PC Injection  
**Diffuser** PC Opal Diffuser  
**Dimensions(mm)** 50(W) x 71(H)

## OPTICAL SPECIFICATIONS

**Optics** Symmetrical  
**Light Output Angle** 120°  
**UGR Value** UGR ≤ 22  
**CRI** CRI ≥ 80  
**Color Bin Value** Mc Adams ≤ 3

## ELECTRICAL

**Power (W)** 18-44W  
**Power Factor** >0.95  
**Light Source** Mid Power LED  
**Cabling** Halogen-Free  
**Input Voltage** 220-240V AC / 50-60 Hz  
**LED Driver** High Efficiency Constant Current Output  
**Ambient Temperature** -20°C / +50°C  
**LED Lifetime L80B50** >50.000 Hour

## OPTIONAL

- DALI - 1-10V DIM  
- Tunable White - Emergency Lighting Unit  
- CRI > 90 - 2700K ~ 6500K  
- Different RAL Color Options - Plug-in Connector  
- Class-II Protection Class - PIR Sensor  
- AC-DC Supply(MBS)

## ASSEMBLY

**Installation Type** Surface Mounted  
**Mounting Apparatus** Metal Bracket

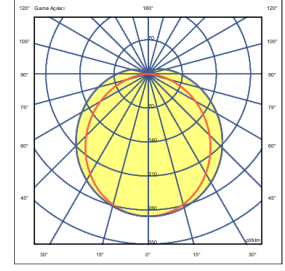
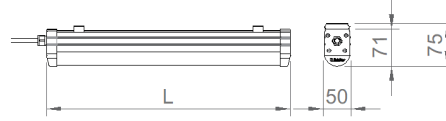
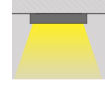


GLOW WIRE  
650°C



IP  
65

IK  
09



Order Code	W	Lm	CCT	CRI	L (mm)
07108.06.40.021	18	2300	4000	Ra>80	595

