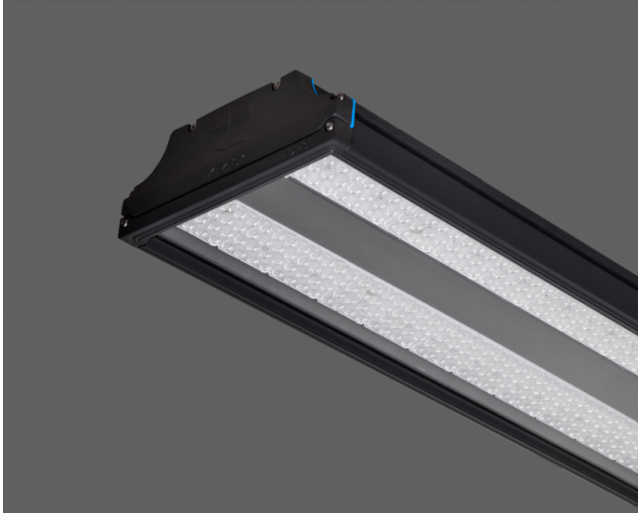


Force-C Cool

Indoor Lighting - Industrial Lighting



Colour Options



Ral 7016

TECHNICAL INFORMATION

Housing	Extruded Aluminum Profile
Side Cover	PC Injection
Reflector	UV Stabilized Lens + Heat Resistant Tempered Clear Glass
Paint	Electrostatic Powder Paint

OPTICAL SPECIFICATIONS

Optics	Symmetric-Asymmetric
Light Output Angle	30°,60°,90°,20x100°
UGR Value	UGR ≤ 22
CRI	CRI ≥ 80
Color Bin Value	Mc Adams ≤ 3

ELECTRICAL

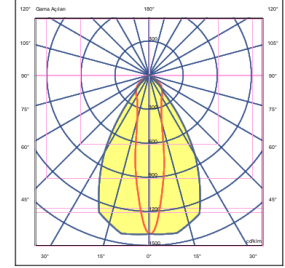
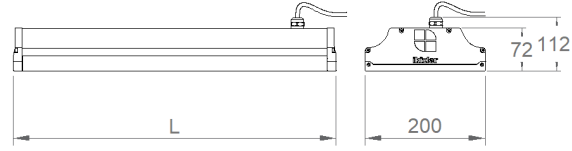
Power (W)	69-145W
Power Factor	>0.95
Light Source	Mid Power LED
Cabling	Halogen-Free
Input Voltage	220-240V AC / 50-60 Hz
LED Driver	High Efficiency Constant Current Output
Ambient Temperature	-40°C / +60°C
LED Lifetime L80B50	>50.000 Hour

OPTIONAL

- DALI	- 1-10V DIM
- Tunable White	- Emergency Lighting Unit
- CRI > 90	- 2700K ~ 6500K
- Different RAL Color Options	- Plug-in Connector
- Class-II Protection Class	- PIR Sensor
- AC-DC Supply(MBS)	- Wire Cage
- SPD	- Safety Filmed Glass

ASSEMBLY

Installation Type	Surface Mounted
Mounting Apparatus	Metal Bracket



Order Code	W	Lm	CCT	CRI	L (mm)	Kg
07308.4S.40.105	69	10500	4000	Ra>80	450	3.5
07308.6C.40.170	110	16700	4000	Ra>80	600	5.1
07308.7C.40.228	150	22800	4000	Ra>80	745	6.6

