

# Snow-T 026

Indoor Lighting - Downlight Lighting



Colour Options



## TECHNICAL INFORMATION

<b>Housing</b>	Aluminum
<b>Frame</b>	Aluminum Injection
<b>Diffuser</b>	Opal with High Light Transmittance
<b>Paint</b>	Electrostatic Powder Paint

## OPTICAL SPECIFICATIONS

<b>Optics</b>	Symmetrical
<b>Light Output Angle</b>	110°
<b>UGR Value</b>	UGR ≤ 22
<b>CRI</b>	CRI ≥ 80
<b>Color Bin Value</b>	Mc Adams ≤ 3

## ELECTRICAL

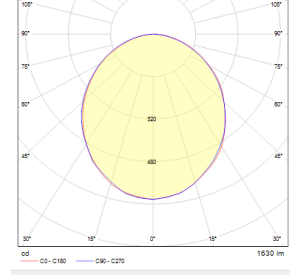
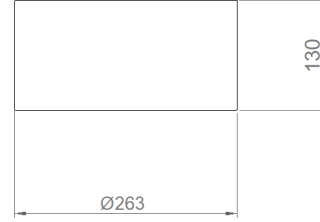
<b>Power (W)</b>	30W
<b>Power Factor</b>	>0.95
<b>Light Source</b>	SMD Mid Power LED
<b>Cabling</b>	Halojen-Free
<b>Input Voltage</b>	220-240V AC / 50-60 Hz
<b>LED Driver</b>	High Efficiency Constant Current Output
<b>Ambient Temperature</b>	-20°C / +50°C
<b>LED Lifetime L80B50</b>	>50.000 Hour

## OPTIONAL

- DALI	- 1-10V DIM
- Tunable White	- Emergency Lighting Unit
- CRI > 90	- 2700K ~ 6500K
- Different RAL Color Options	- Class-I Protection Class
- PIR Sensor	- AC-DC Supply(MBS)

## ASSEMBLY

**Installation Type** Surface Mounted



Order Code	W	Lm	CCT	CRI	ØxH (mm)
03170.23.30.032	30	2950	3000	Ra>80	Ø263x130
03170.23.40.032	30	3150	4000	Ra>80	Ø263x130

