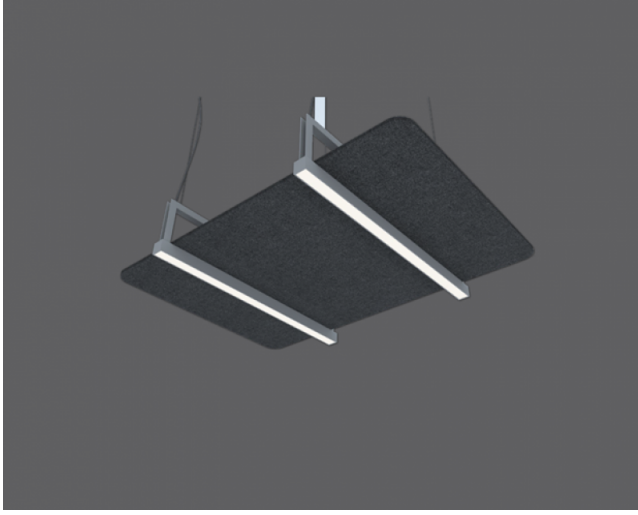


# Stay Bar

Acoustic Lighting - STILL Series



## TECHNICAL INFORMATION

<b>Housing</b>	Extruded Aluminum Profile + Metal Carrier
<b>Diffuser</b>	High Transmission Opal Diffuser
<b>Accessories</b>	Acoustic Panel
<b>Paint</b>	Electrostatic Powder Painted

## OPTICAL SPECIFICATIONS

<b>Light Distribution</b>	Symmetrical
<b>Light Output Angle</b>	120°
<b>UGR Value</b>	UGR ≤ 19
<b>CRI</b>	CRI ≥ 80
<b>Color Bin Value</b>	Mc Adams ≤ 3

## ELECTRICAL

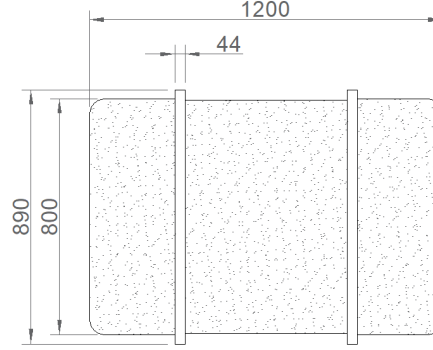
<b>Power (W)</b>	33W
<b>Power Factor</b>	>0.95
<b>Light Source</b>	SMD Mid Power LED
<b>Cabling</b>	Halogen-Free
<b>Input Voltage</b>	220-240V AC / 50-60 Hz
<b>LED Driver</b>	High Efficiency Constant Current Output
<b>Ambient Temperature</b>	-20°C / +50°C
<b>LED Lifetime L80B50</b>	>50.000 Hour

## OPTIONAL

DALI

## ASSEMBLY

**Installation Type** Surface Mounted, Pendant



Order Code	W	Lm	CCT	CRI	WxLxH (mm)	Kg
01149.41.30.042	33	3050	3000	Ra>80	890x1200x170	6,0
01149.41.40.045	33	3170	4000	Ra>80	890x1200x170	6,0

