

Flat-T 600

Indoor Lighting - Surface Mounted Lighting



Colour Options



Ral 9016

Ral 9006

Ral 9005

TECHNICAL INFORMATION

| | |
|-----------------|----------------------------------|
| Housing | Metal Sheet |
| Diffuser | High Transmittance Opal Diffuser |
| Paint | Electrostatic Powder Paint |

OPTICAL SPECIFICATIONS

| | |
|---------------------------|--------------|
| Optics | Symmetrical |
| Light Output Angle | 120° |
| UGR Value | UGR ≤ 22 |
| CRI | CRI ≥ 80 |
| Color Bin Value | Mc Adams ≤ 3 |

ELECTRICAL

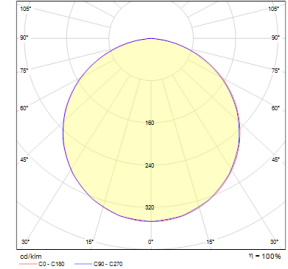
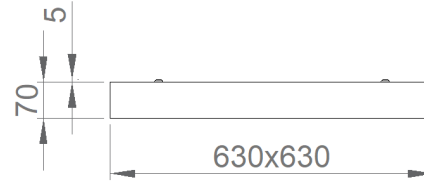
| | |
|----------------------------|---|
| Power (W) | 28-35W |
| Power Factor | >0.95 |
| Light Source | SMD Mid Power LED |
| Cabling | Halogen-Free |
| Input Voltage | 220-240V AC / 50-60 Hz |
| LED Driver | High Efficiency Constant Current Output |
| Ambient Temperature | -20°C / +50°C |
| LED Lifetime L80B50 | >50.000 Hour |

OPTIONAL

| | |
|-------------------------------|---------------------------|
| - DALI | - 1-10V DIM |
| - Tunable White | - Emergency Lighting Unit |
| - CRI > 90 | - 2700K ~ 6500K |
| - Different RAL Color Options | - Plug-in Connector |
| - Class-II Protection Class | - PIR Sensor |
| - AC-DC Supply(MBS) | |

ASSEMBLY

| | |
|---------------------------|-----------------|
| Installation Type | Surface Mounted |
| Mounting Apparatus | Screw Dowel Set |



| Order Code | W | Lm | CCT | CRI | WxLxH (mm) | Kg |
|-----------------|----|------|------|-------|------------|-----|
| 03135.66.30.033 | 28 | 2800 | 3000 | Ra>80 | 630x630x70 | 4.0 |
| 03135.66.40.034 | 28 | 3210 | 4000 | Ra>80 | 630x630x70 | 4.0 |
| 03135.66.30.029 | 31 | 2900 | 3000 | Ra>80 | 630x630x70 | 4.0 |
| 03135.66.40.030 | 31 | 3160 | 4000 | Ra>80 | 630x630x70 | 4.0 |
| 03135.66.30.036 | 33 | 3600 | 3000 | Ra>80 | 630x630x70 | 4.0 |
| 03135.66.40.037 | 33 | 3960 | 4000 | Ra>80 | 630x630x70 | 4.0 |
| 03135.66.30.040 | 35 | 4000 | 3000 | Ra>80 | 630x630x70 | 4.0 |
| 03135.66.40.041 | 35 | 4100 | 4000 | Ra>80 | 630x630x70 | 4.0 |

