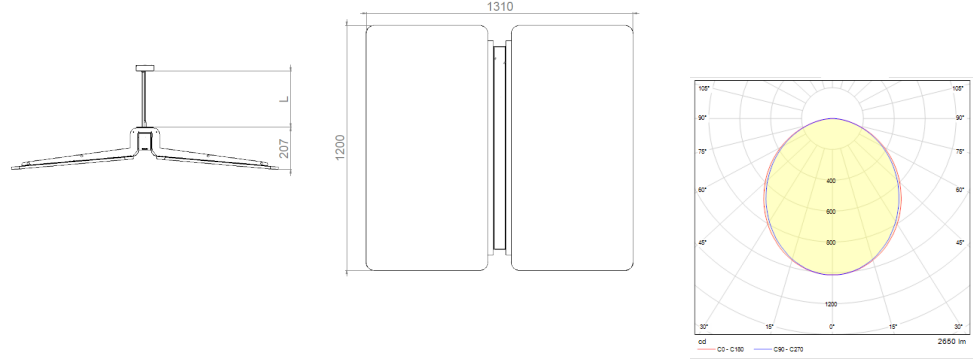
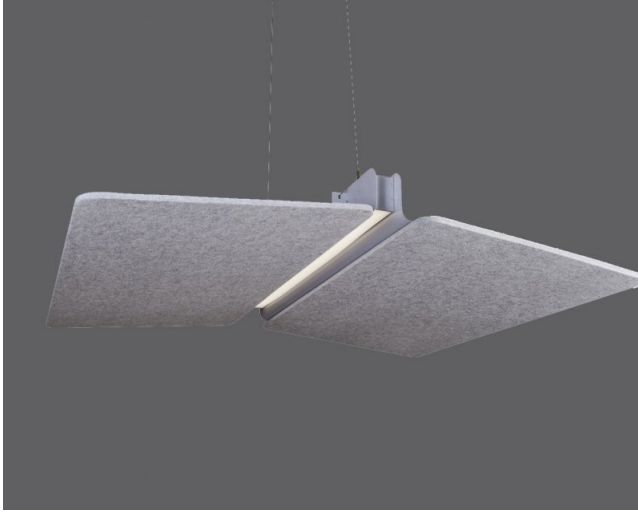


Rest-SQ

Acoustic Lighting - STILL Series



| Order Code | W | Lm | CCT | CRI | WxLxH (mm) | Kg |
|-----------------|----|------|------|-------|---------------|------|
| 01183.11.30.031 | 29 | 2675 | 3000 | Ra>80 | 1313x1200x190 | 14,0 |
| 01183.11.40.032 | 29 | 2875 | 4000 | Ra>80 | 1313x1200x190 | 14,0 |

TECHNICAL INFORMATION

| | |
|--------------------|---|
| Housing | Extruded Aluminum Profile + Metal Carrier |
| Diffuser | High Transmission Opal Diffuser |
| Accessories | Acoustic Panel |
| Paint | Electrostatic Powder Paint |

OPTICAL SPECIFICATIONS

| | |
|---------------------------|--------------|
| Light Distribution | Symmetrical |
| Light Output Angle | 120° |
| UGR Value | UGR ≤ 19 |
| CRI | CRI ≥ 80 |
| Color Bin Value | Mc Adams ≤ 3 |

ELECTRICAL

| | |
|----------------------------|---|
| Power (W) | 29W |
| Power Factor | >0.95 |
| Light Source | SMD Mid Power LED |
| Cabling | Halogen-Free |
| Input Voltage | 220-240V AC / 50-60 Hz |
| LED Driver | High Efficiency Constant Current Output |
| Ambient Temperature | -20°C / +50°C |
| LED Lifetime L80B50 | >50.000 Hour |

OPTIONAL

DALI

ASSEMBLY

Installation Type Surface Mounted, Pendant

