

# Corvus Inn

Indoor Lighting - Pendant Lighting



## Colour Options



## TECHNICAL INFORMATION

**Housing** Extruded Aluminum Profile  
**Diffuser** High Light Transmittance Opal  
**Paint** Electrostatic Powder Paint

## OPTICAL SPECIFICATIONS

**Optics** Symmetrical  
**Light Output Angle** 120°  
**UGR Value** UGR ≤ 22  
**CRI** CR ≥ 80  
**Color Bin Value** Mc Adams ≤ 3

## ELECTRICAL

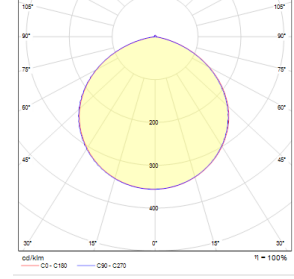
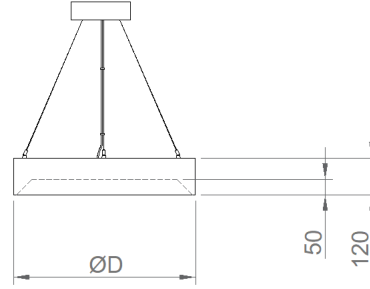
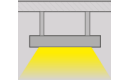
**Power (W)** 19-38W  
**Power Factor** >0.95  
**Light Source** SMD Mid Power LED  
**Cabling** Halogen-Free  
**Input Voltage** 220-240V AC / 50-60 Hz  
**LED Driver** High Efficiency Constant Current Output  
**Ambient Temperature** -20°C / +50°C  
**LED Lifetime L80B50** >50.000 Hour

## OPTIONAL

- DALI - 1-10V DIM  
- Tunable White - Emergency Lighting Unit  
- CRI > 90 - 2700K ~ 6500K  
- Different RAL Color Options - Plug-in Connector  
- Class-II Protection Class - AC-DC Supply(MBS)

## ASSEMBLY

**Installation Type** Surface Mounted, Pendant  
**Mounting Apparatus** Height Adjustable Steel Wire



Order Code	W	Lm	CCT	CRI	ØDx(H)	Kg
03170.40.30.018	19	1760	3000	Ra>80	Ø400x120	2,7
03170.40.40.019	19	1950	4000	Ra>80	Ø400x120	2,7
03170.60.30.030	38	4050	3000	Ra>80	Ø600x120	4,0
03170.60.40.040	38	4200	4000	Ra>80	Ø600x120	4,0

